



St. Julians Farm Road, SE27 | Guide Price £550,000

02087029888

[westnorwood@pedderproperty.com](mailto:westnorwood@pedderproperty.com)

**pedder**  
We live local



# In General

- Two Double Bedrooms
- Private Garden
- Seperate Eat-In Kitchen
- Ideally Located
- Potential Option to Acquire Share of Freehold

# In Detail

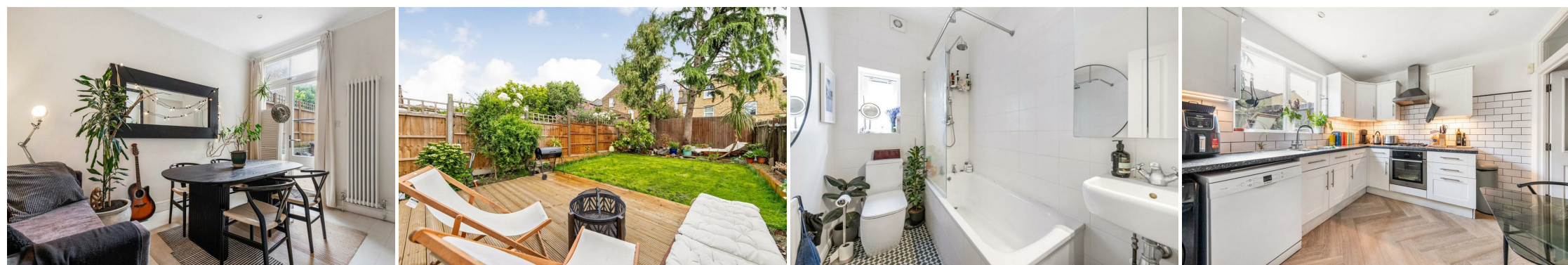
**\*GUIDE PRICE £550,000 - £575,000\*** Nestled in the charming area of West Norwood, this delightful two bedroom ground floor Victorian conversion flat on St. Julians Farm Road offers a perfect blend of modern living and classic character. Boasting two spacious double bedrooms, this apartment is ideal for couples, small families, or those seeking a comfortable home with ample space.

The property features a well-appointed reception room that invites natural light, creating a warm and welcoming atmosphere. The eat-in kitchen is a standout feature, providing a lovely space for family meals or entertaining friends. Recently refurbished by the current owner, the flat showcases contemporary finishes while retaining its original Victorian charm.

One of the highlights of this property is the private garden, a rare find in London. This outdoor space is perfect for enjoying a morning coffee, hosting summer barbecues, or simply unwinding after a long day.

With its convenient location, residents will benefit from easy access to local amenities, parks, and excellent transport links, making it a fantastic choice for those who wish to explore all that London has to offer. This apartment is not just a place to live; it is a home where comfort and style come together beautifully.

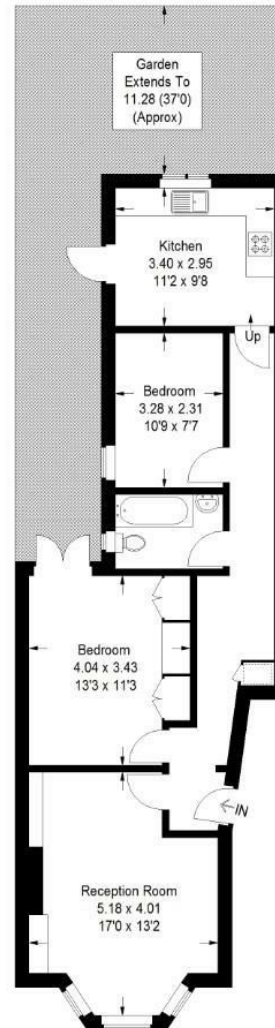
EPC: D | Council Tax Band: D | Lease: 102 years remaining | SC: £1170pa | GR: £50pa | BI: Included in the service charge



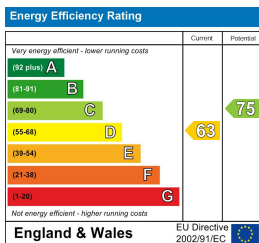
# Floorplan

St. Julians Farm Road, SE27

Approximate Gross Internal Area  
68.5 sq m / 737 sq ft



Copyright www.pedderproperty.com © 2026  
These plans are for representation purposes only as defined by RICS - Code of Measuring Practice. Not drawn to Scale. Windows and door openings are approximate. Please check all dimensions, shapes and compass bearing before making any decisions reliant upon them.



Pedder Property Ltd trading as Pedder for themselves and for the vendor/landlord of this property whose agents they are, give notice that (1) these particulars do not constitute any part of an offer or contract, (2) all statements contained within these particulars are made without responsibility on the part of Pedder or the vendor/landlord, (3) whilst made in good faith, none of the statements contained within these particulars are to be relied upon as a statement of representation or fact, (4) any intending purchaser/tenant must satisfy him/herself by inspection or otherwise as to the correctness of each of the statements contained within these particulars, (5) the vendor/landlord does not make or give either Pedder or any person in their employment any authority to make or give representation or warranty whatsoever in relation to this property.